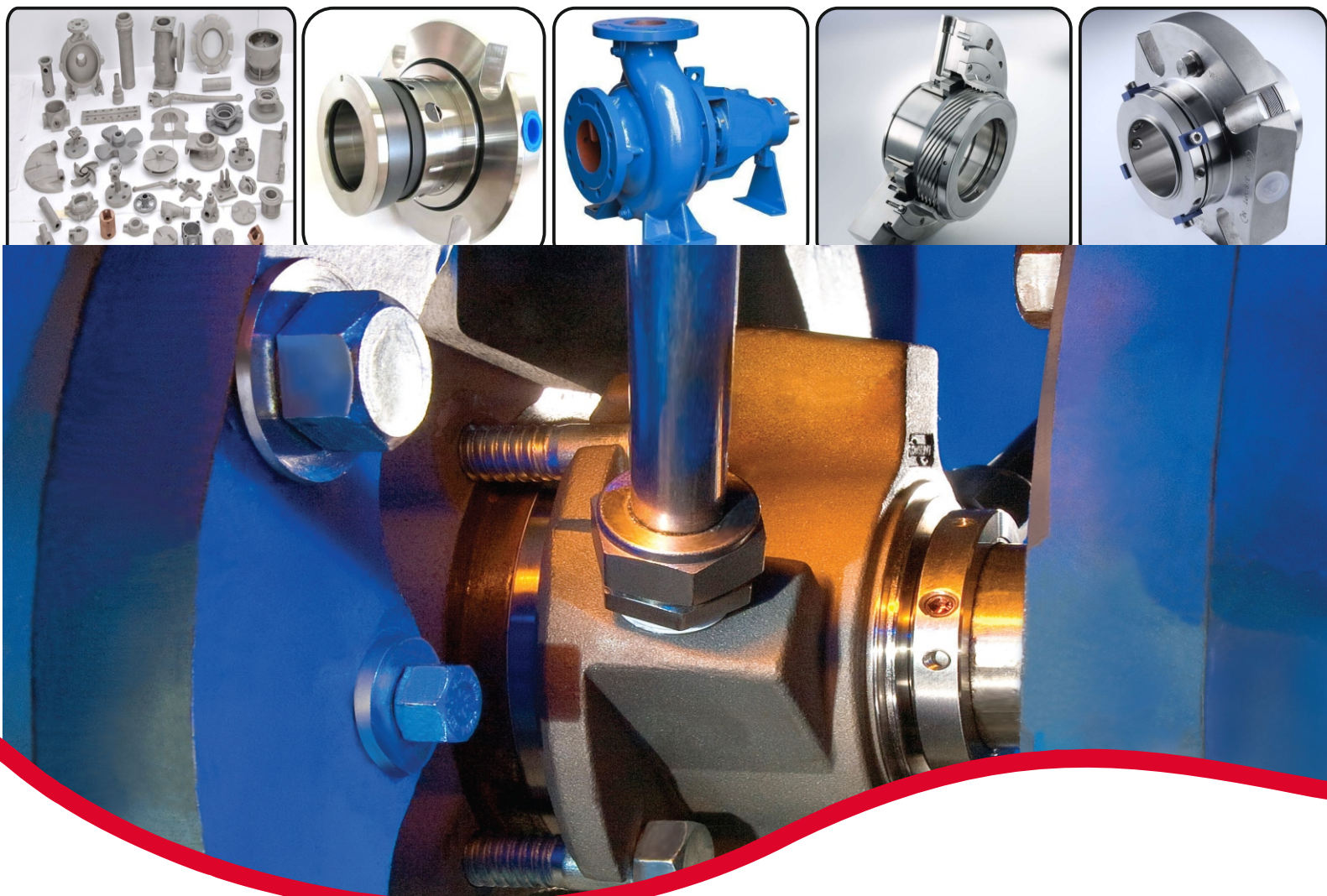




JARP ENGINEERING

Excellence in Motion

PRODUCT RANGE



JARP ENGINEERING, manufacture and supply complete range of standard and engineered mechanical seals, Pumps, Casting & Extruded Rubber Products to our customers across various process industries such as Oil & Gas, Petrochemicals, Power, Chemical, Pharmaceutical and General Industries etc.

We have made several success stories and catered several organizations and have had good working relationship with all of them in achieving the trust and the credibility with the clients. With this reason it has been our utmost priority to provide complete customer satisfaction by meeting the customer needs in the best possible way by providing a product rich in quality and service life.

Our products are designed and manufactured meeting stringent quality standards and comply with international norms and regulations on emission controls.

WHAT WE OFFER?

- Offer all types of mechanical seal & seal support systems.
- Offer mechanical seals for all critical applications in various configurations with suitable API plans.
- Offer RCA for bad acting mechanical seals and provide permanent solution.
- Offer mechanical seal refurbishment services.

PRODUCT PORTFOLIO:

- Standard mechanical seals
- Metal Bellow Seals
- Mechanical Seals for Compressor
- Mechanical Seals for Agitator
- API 682 (Engineered) Seals
- Slurry Mechanical Seals
- Turbine Pump Seals
- Sundyne Pump Seals
- Special High Pressure Seals
- Carbon Seal Ring (Bushes, Carbon Segmental)
- Gaskets & Packing
- Seal Components
- Pumps
- Casting
- Extruded Rubber

MATERIALS:

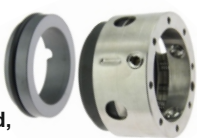
- Faces: Carbon R, Carbon M, Lecrolloy, Ceramic, Tungsten Carbide, Silicone Carbide.
- Secondary Seal: Nitrile, Silicone, EPDM, Viton, Kalrez, Chemraz, Atlas, PTFE, Flexible Graphite.
- Hardware: SS304, SS316, Duplex SS, Alloy 20, Hastelloy C, Hastelloy B, Monel, AM 350, Inconel 718.
- Spring: SS316, Hastelloy C.

OTHER SIZE AND MATERIALS CAN BE OFFERED ON REQUEST.

PUSHER SEALS

J80B & J85B :

Multi Spring,
Single Inside Mounted,
Balanced



- **Shaft Diameter** : 16 to 100 mm
- **Pressure** : 35 Bars(max)
- **Temperature** : -40 to +180°C
- **Velocity** : Up to 20 m/sec
- **Application** : Petrochemicals, Refineries, General Chemicals & Light Hydrocarbon.

JROB0 & JROB5 :

Multi Spring,
Single Inside Mounted,
Balanced



- **Shaft Diameter** : 1" to 4.5"
- **Pressure** : 25 Bars(max)
- **Temperature** : -20 to +180°C
- **Velocity** : Up to 20 m/sec
- **Application** : Food Industry, Sugar Industry, Water Treatment & Media Containing Slurry, Chemical Industry, Mining Industry, Water Treatment

J70H & J75H :

Wave / Multi Spring,
Single Inside Mounted,
Balanced



- **Shaft Diameter** : 18 to 100 mm
- **Pressure** : 60 Bars(max)
- **Temperature** : -45 to +180°C
- **Velocity** : Up to 20 m/sec
- **Application** : Light Abrasive Slurry, Light Sewage Water, High Viscosity Fluids, General and Light Chemicals & Hydrocarbons.

JHJ4 :

Multi Spring,
Single Inside Mounted,
Balanced



- **Shaft Diameter** : 18 to 100 mm
- **Pressure** : 25 Bars(max)
- **Temperature** : -20 to +180°C
- **Velocity** : Up to 20 m/sec
- **Application** : Food Industry, Sugar Industry, Chemical Industry, Mining Industry, Water Treatment

JHJ92 :

Wave Spring,
Single Inside Mounted,
Balanced



- **Shaft Diameter** : 18 to 100 mm
- **Pressure** : 25 Bars(max)
- **Temperature** : -20 to +180°C
- **Velocity** : Up to 20 m/sec
- **Application** : Food Industry, Sugar Industry, Chemical Industry, Mining Industry, Water Treatment & Media Containing Slurry.

J88B2 :

Multi Spring,
Single Outside Mounted,
Reversed Balanced



- **Shaft Diameter** : 20 to 100 mm
- **Pressure** : 25 Bars(max)
- **Temperature** : -45 to +180°C
- **Velocity** : Up to 20 m/sec
- **Application** : Corrosive Chemicals, Hydrocarbons, General & Light Chemicals.

J80U & J85U :

Multi Spring,
Single Inside Mounted,
Unbalanced



- **Shaft Diameter** : 16 to 100 mm
- **Pressure** : 10 Bars(max)
- **Temperature** : -40 to +180°C
- **Velocity** : Up to 20 m/sec
- **Application** : Petrochemicals, Petrol Refineries, General Chemicals & Light Hydrocarbon.

JROU :

Multi Spring,
Single Inside Mounted,
Unbalanced



- **Shaft Diameter** : 1" to 4.5"
- **Pressure** : 10 Bars(max)
- **Temperature** : -20 to +180°C
- **Velocity** : Up to 20 m/sec
- **Application** : Food Industry, Sugar Industry, Chemical Industry, Mining Industry, Water Treatment & Media Containing Slurry.

J70U/J75U

Single Seal,
Unbalanced Independent of direction
of rotation, Single Seal



- **Shaft Diameter** : 12 to 100mm
- **Pressure** : 10 Bars(max)
- **Temperature** : -60 to +200°C
- **Velocity** : Up to 20 m/sec
- **Application** : Petrochemical Industry, Chemical Industry, Process Industry, Chemical Standard Pump, Vertical Screw Pump

J508 :

Single Spring,
Single Inside Mounted,
Unbalanced



- **Shaft Diameter** : 14 to 120 mm
- **Pressure** : 8 Bars(max)
- **Temperature** : -23 to +180°C
- **Velocity** : Up to 20 m/sec
- **Application** : Water Pumps, Clear Chemicals, Circulation Pumps.

J3N & J2N :

Conical Spring,
Single Inside Mounted,
Unbalanced



- **Shaft Diameter** : 12 to 90mm
- **Pressure** : 10 Bars(max)
- **Temperature** : -20 to +180°C
- **Velocity** : Up to 20 m/sec
- **Application** : Water Pumps, Circulating Pumps for Central Heating, Chemical Pumps, Sewage & Submersible Pumps.

J70N & J75N :

Wave / Multi Spring,
Single Inside Mounted,
Unbalanced



- **Shaft Diameter** : 18 to 100 mm
- **Pressure** : 15 Bars(max)
- **Temperature** : -45 to +180°C
- **Velocity** : Up to 20 m/sec
- **Application** : Light Abrasive Slurry, Light Sewage Water, High Viscosity Fluid, General and Light Chemicals & Hydrocarbon, with Back to Back Seal

METAL / TEFLON BELLOW SEAL

JMBO :

Inside Mounted,
Balanced,

Metal Formed Bellow with Non Dynamic Elastomer

- **Shaft Diameter** : 20 to 100 mm
- **Pressure** : 18 Bars(max)
- **Temperature** : -20 to +200°C
- **Velocity** : Up to 20 m/sec
- **Application** : Chemicals, Petrochemicals & Corrosive Chemicals.



JMBG :

Inside Mounted,
Balanced,

Metal Bellow with Graphite Packing for high temperature

- **Shaft Diameter** : 19 to 100 mm
- **Pressure** : 18 Bars(max)
- **Temperature** : -20 to +350°C
- **Velocity** : Up to 20 m/sec
- **Application** : Chemicals, Petrochemicals & Petroleum Refineries, Hot Oil.



JMBHS :

Inside Mounted,
Balanced,

Metal Bellow with Graphite Packing for high temperature

- **Shaft Diameter** : 19 to 100 mm
- **Pressure** : 18 Bars(max)
- **Temperature** : -20 to +350°C
- **Velocity** : Up to 20 m/sec
- **Application** : Chemicals, Petrochemicals & Petroleum Refineries, Hot Oil.



JMRB :

Inside Mounted,
Rotating Bellows,

Balanced Independent of direction of rotation
Roller Bellows

- **Shaft Diameter** : 19 mm to 100 mm
- **Pressure** : 16 Bars(max)
- **Temperature** : -40 to +220°C
- **Velocity** : Up to 20 m/sec
- **Application** : Process industry, Oil & gas industry, Chemical Industry, Pharmaceutical industry, Pulp & Paper industry, Food & beverage Industry.



JTBR :

Outside Mounted,
Reverse Balanced
Teflon Bellow

- **Replaceable Face** : GFT, CFT, Carbon, Silicon
- **Shaft Diameter** : 18 to 100 mm
- **Pressure** : 8 Bars(max)
- **Temperature** : -45 to +160°C
- **Velocity** : Up to 20 m/sec
- **Application** : Extremely Corrosive Chemical.



JTB :

Outside Mounted,
Reverse Balanced
Teflon Bellow

- **Non Replaceable Face** : GFT & CFT
- **Shaft Diameter** : 18 to 100 mm
- **Pressure** : 8 Bars(max)
- **Temperature** : -45 to +160°C
- **Velocity** : Up to 20 m/sec
- **Application** : Extremely Corrosive Chemical.



RUBBER BELLOW SEAL

JMG1 :

Inside Mounted,
Rubber Bellow

- **Shaft Diameter** : 10 to 100 mm
- **Pressure** : 13 Bars(max)
- **Temperature** : -20 to +100°C
- **Velocity** : Up to 10 m/sec
- **Application** : Water Pumps, Submersible & Sewage Pumps.



J2100 :

Inside Mounted,
Rubber Bellow

- Inside Mounted, Rubber Bellow
- **Shaft Diameter** : 16 to 75 mm
 - **Pressure** : 18 Bars(max)
 - **Temperature** : -20 to +180°C
 - **Velocity** : Up to 20 m/sec
 - **Application** : Pumps.



J502 :

Inside Mounted,
Rubber Bellow

- Inside Mounted, Rubber Bellow
- **Shaft Diameter** : 16 to 75 mm
 - **Pressure** : 30 Bars(max)
 - **Temperature** : -20 to +180°C
 - **Velocity** : Up to 20 m/sec
 - **Application** : Pumps.



J TYPE-2 & TYPE-1

Inside Mounted,
Rubber Bellow

- **Shaft Diameter** : 16 to 75 mm
- **Pressure** : 18-30 Bars(max)
- **Temperature** : -20 to +120°C
- **Velocity** : Up to 20 m/sec
- **Application** : Water Pumps, Mixer Compressors & Blenders



JRB43 & J560

Inside Mounted,
Rubber Bellow

- **Shaft Diameter** : 12 to 75 mm
- **Pressure** : 10 Bars(max)
- **Temperature** : -20 to +100°C
- **Velocity** : Up to 20 m/sec
- **Application** : Water Pumps. Submersible Pumps & Hot Oil Pumps



JSTORK :

Inside Mounted,
Rubber Bellow

- **Shaft Diameter** : 10 to 70 mm
- **Pressure** : 5 Bars(max)
- **Temperature** : -20 to +100°C
- **Velocity** : Up to 20 m/sec
- **Application** : Water Pumps.



CARTRIDGE SEALS

JSSU-C :

Cartridge,
Inside Mounted
Unbalanced,
Single Seal



- **Size** : 25mm to 100mm / 1" to 4"
- **Pressure** : 10 Bars(max)
- **Temperature** : -20 to +180°C
- **Velocity** : Up to 20 m/s
- **Application** : Pulp Pumps, Sludge Pumps, Syrup Pumps & Slurry Pumps.

JSTex :

Cartridge,
Inside Mounted
Balanced,
Single Seal



- **Size** : 25mm to 100mm / 1" to 4"
- **Pressure** : 25 Bars(max)
- **Temperature** : -20 to +200°C
- **Velocity** : Up to 20 m/s
- **Application** : Water, Chemical, Power, Slurry Pumps & Pharmaceuticals, Light Hydrocarbon

JDTex :

Cartridge,
Inside Mounted
Balanced,
Double Seal



- **Size** : 25mm to 100mm / 1" to 4"
- **Pressure** : 25 Bars(max)
- **Temperature** : -20 to +200°C
- **Velocity** : Up to 20 m/s
- **Application** : Water, Chemical, Power, Light Hydrocarbon Slurry Pumps . Pharmaceuticals ,

JMBG-C :

Cartridge,
Inside Mounted
Balanced,
Single Seal



- **Size** : 25mm to 100mm / 1" to 4"
- **Pressure** : 20 Bars(max)
- **Temperature** : -20 to +180°C
- **Velocity** : Up to 20 m/s
- **Application** : Water, Chemical, Power, Light Hydrocarbon, Hot Oil, Pharmaceuticals.

JDSB-C :

Cartridge,
Inside Mounted
Balanced,
Double Seal



- **Size** : 25mm to 100mm / 1" to 4"
- **Pressure** : 25 Bars(max)
- **Temperature** : -20 to +180°C
- **Velocity** : Up to 20 m/s
- **Application** : Food Industry, Chemical Industry, Mining Industry, Water Treatment, Media Containing Slurry.

J90B :

Cartridge,
Inside Mounted
Balanced,
Single Seal
Slurry Seal

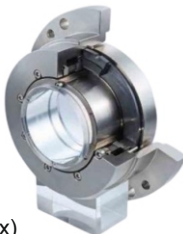


- **Size** : 25mm to 100mm / 1" to 4"
- **Pressure** : 20 Bars(max)
- **Temperature** : -20 to +180°C
- **Velocity** : Up to 20 m/s
- **Application** : Paper & Pulp, Textile Industry, Slurry Pumps.

ENGINEERED SEALS

JA6100 / COMPRESSOR SEAL

Single Seal
Balance,
Independent of direction
of rotation,



- **Size** : 18-100mm
- **Pressure** : 20 Bars(max)
- **Temperature** : -20 to +180°C
- **Velocity** : Up to 20 m/s
- **Application** : Process Industry, Slurry Pumps, Chemical Industry, Water Treatment Pulp

JA6200

Single / Dual Seal
Balanced,
Independent of direction
of rotation,



- **Size**: 25-100mm,
- **Pressure**: 25 bar,
- **Temperature**:-40° to 220°c,
- **Velocity**: 20m/sec
- **Application**: Chemical Industry, Petrochemical Industry, Oil & Gas Industry, Process Industry, ANSI Process Pump, Pulp & Paper Industry

JA6300

Single / Dual Seal
Balanced,
Independent of direction
of rotation, Metal Bellows



- **Size**: 20-80mm,
- **Pressure**: 25 bar,
- **Temperature**:-40° to 220°c,
- **Velocity**: 20m/sec
- **Application**: Chemical Industry, Process Industry, Hot/Cold media, Highly viscous media, Pumps, Special Rotating Equipment Engineered Seals

JA6400

Single Seal
Balanced,
Independent of direction
of rotation,
Springs isolated from medium



- **Size**: 20-80mm,
- **Pressure**: 18 bar,
- **Temperature**:-20° to 180°c,
- **Velocity**: 20m/sec
- **Application**: Process Industry, Slurry Pumps, Food Industry, Petrochemical Industry

JA6500

Dual Seal
Balanced,
Independent of direction
of rotation,
Multiple Springs



- **Size**: 40-240mm,
- **Pressure** : 150 bar,
- **Temperature** : 0° to 200°c,
- **Velocity** : 60m/sec
- **Application** : Process Industry, Crude Oil Feed Pumps, Chemical Industry, Power Plant, Oil & Gas.

JA6600/Boiler Feed Water Seals

Single Seal
Balanced,
Independent of direction
of rotation,
Spring isolated from medium



- **Size**: 20-80mm,
- **Pressure** : 18 bar,
- **Temperature** : -20° to 180°c,
- **Velocity** : 20m/sec
- **Application**: Process Industry, Slurry Pumps, Chemical Industry, Water Treatment, Food Industry

REACTOR SEALS

JADRY : Dry Seal



- **Size** : 20 to 150mm
- **Pressure** : Vac to 8 Bars(max)
- **Temperature** : Ambient to +130°C
- **Velocity** : Up to 320 RPM
- **Application** : Food Products, Pharmaceutical Products, Mixers & Agitators.

JADRY-BG : Dry Seal with Bearing



- **Size** : 20 to 150mm
- **Pressure** : Vac to 8 Bars(max)
- **Temperature** : Ambient to +130°C
- **Velocity** : Up to 320 RPM
- **Application** : Food Products, Pharmaceutical Products, Mixers & Agitators.

JAWET-BG : Wet Seal with Bearing



- **Size** : 25 to 150mm
- **Pressure** : Vac to 8 Bars(max)
- **Temperature** : Ambient to +180°C
- **Velocity** : Up to 320 RPM
- **Application** : Corrosive Chemicals, Hydrocarbons, General & light Chemical, Mixers & Agitators.

JAWET : Wet Seal



- **Size** : 25 to 150mm
- **Pressure** : Vac to 8 Bars(max)
- **Temperature** : Ambient to +180°C
- **Velocity** : Up to 320 RPM
- **Application** : Corrosive Chemicals, Hydrocarbons, General & light Chemical, Mixers & Agitators.

JADU : Double Unbalanced Seal



- **Size** : 25 to 150mm
- **Pressure** : Vac to 8 Bars(max)
- **Temperature** : Ambient to +200°C
- **Velocity** : Up to 600 RPM
- **Barrier Fluid Pressure** : Vessel Pressure + 1.5 Bar
- **Application** : Petrochemicals, General Chemicals, Light Hydrocarbons Emitting Vapour & Pharmaceutical Ind.

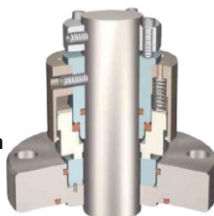
JADB : Double Balanced Seal



- **Size** : 25 to 150mm
- **Pressure** : Vac to 40 Bars(max)
- **Temperature** : Ambient to +200°C
- **Velocity** : Up to 300 RPM
- **Barrier Fluid Pressure** : Vessel Pressure + 1.5 Bar
- **Application** : Petrochemicals, General Chemicals, Light Hydrocarbons Emitting Vapour & Pharma Ind.

AGITATOR SEALS

JAKRD Single, Reverse, Balanced Independent of direction of rotation, Dry Running



- **Size** : 20-150mm,
- **Pressure** : Vacuum 23 bar,
- **Temperature** : Ambient to 160°C,
- **Velocity** : 320 RPM
- **Application** : Corrosive Chemicals, Pharma, Industry, Chemical Industry, Food/Beverage Industry, Mixers/Agitators

JAKRWB Single, Reverse, Balanced Independent of direction of rotation, Dry Running For Steel/glass lined Vessels



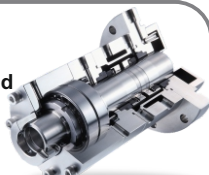
- **Size** : 25-150mm,
- **Pressure** : Vacuum... 8 bar,
- **Temperature** : Ambient to 200°C,
- **Velocity** : 320 RPM
- **Application** : Petrochemical Industry, Chemical Industry, Pharmaceutical Industry, Agitators/Reactors, Food/Beverage Industry,

JAKB/KUB Double action back to back Independent of direction of rotation, Dry Running Pressurized Barrier Fluid



- **Size** : 25-150mm,
- **Pressure** : Vacuum... 10 bar,
- **Temperature** : Ambient to 200°C,
- **Velocity** : 600 RPM
- **Application** : Petrochemical Industry, Chemical Industry, Pharmaceutical Industry, Refining Industry, Food/Beverage Industry,

JAERB Double Seal with integrated bearing / without bearing Independent of direction of rotation, Balance / Unbalanced



- **Axial movement** : max. 0.3 mm
- **Pressure** : Vacuum 10 bar,
- **Temperature** : -30°C to +200°C,
- **Rotational Speed** : max. 200 min⁻¹
- **Application** : Chemical Industry, Food and Beverage Industry, Reactors, Mixer, Polymerization Agitator

JAHS/D Top entry drives, Double Seal, Unbalanced, Independent of direction of rotation,



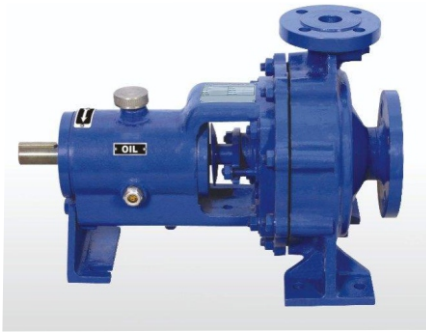
- **Size** : 20-500 mm
- **Pressure** : Vacuum 30 bar
- **Temperature** : -40°C to +200°C
- **Velocity** : 0 to 5 m/s
- **Application** : Refined Technology, Petrochemical Industry, Chemical Industry, Pharmaceutical Ind. Reactors, Agitators, Special Rotating Equipment

JAMR/D Top, side and bottom entry drives Unbalanced, Liquid Lubricated Double Seal, Independent of direction of rotation, With or without bearing available



- **Size** : 35-140 mm
- **Pressure** : Vacuum 14 bar,
- **Temperature** : -20°C to +200°C
- **Velocity** : vg.= max 10 m/s
- **Application** : Petrochemical Industry, Chemical Industry, Pharmaceutical Ind., Reactors, Mixers, Dyers.

JCWP



CENTRIFUGAL WATER PUMP

Capacity - Q- up to	400 M ³ / hr
TDH- H- up to	140 MLC
Speed - n -	960 / 1450 / 2900 rpm
Temperature	120° C
Working Pressure	15 Bars
Pump sizes-DN	32 mm to 200 mm

PRODUCT APPLICATIONS

- Chemicals, Dyes & Intermediates
- Oil Extraction and waste oil refineries
- Bulk drugs and Pharmaceuticals
- Effluent Treatment Plants
- Cooling towers
- Cooling Water Circulation
- Water Treatment & Distribution System
- Hot Water Circulation

'JCWP' are in Back Pull-out Construction, Horizontal, Foot Mounted, Single Stage, End suction and Top Centerline Discharge, Confirming to DIN 24255

MATERIAL OF CONSTRUCTION

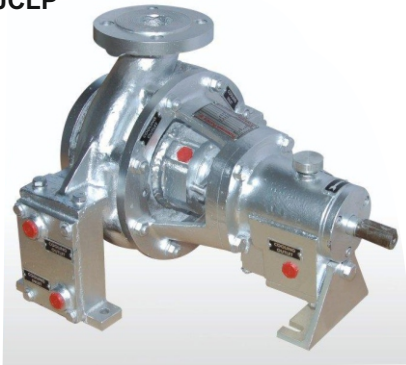
As per ASTM / DIN STANDARDS

- Graded Grey Cast Iron With CI / Br. IMPELLER
- GUN METAL / BRONZE

CONSTRUCTIONAL OPTIONS

- Offered with Closed Impeller.
- Standard Bearing Arrangements.
- Shaft Sealing by Gland Packing / Mechanical Size

JCLP



CENTRIFUGAL PROCESS PUMP

Capacity - Q- up to	250 M ³ / hr
TDH- H- up to	95 MLC
Speed - n -	960 / 1450 / 2900 rpm
Temperature	350° C
Working Pressure	40 Bars
Pump sizes-DN	32 mm to 100 mm

PRODUCT APPLICATIONS

- Chemicals, Dyes & Intermediates
- Oil Extraction and waste oil refineries
- Bulk drugs and Pharmaceuticals
- Thermic Fluid Heating Systems

'JCLP' are in Back Pull-out Construction, Horizontal, Center line Mounted, Single Stage, End Suction and Top Centerline Discharge Suitable for Thermic Fluid & Hot oil also.

MATERIAL OF CONSTRUCTION

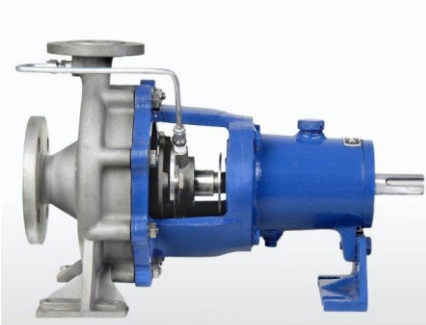
As per ASTM / DIN STANDARDS

- Carbon Steel (WCB) / Alloy Steel
- CF8, CF8M, CF3, CF3M (SS316L), Alloy 20, CD4MCu

CONSTRUCTIONAL OPTIONS

- Offered with Closed Impeller.
- Mechanical Seal (Single Spring / Metallic Bellow).
- Jacketing For Cooling offered for S/Box, Casing Pedestal and Bearing Housing.
- Bearing arrangement available.

JCPP



CENTRIFUGAL PROCESS PUMP

Capacity - Q- up to	400 M ³ / hr
TDH- H- up to	140 MLC
Speed - n -	960 / 1450 / 2900 rpm
Temperature	-10° C to 120° C
Working Pressure	40 Bars
Pump sizes-DN	32 mm to 200 mm

PRODUCT APPLICATIONS

- Cooling Towers
- Chemicals, Dyes & Intermediates
- Oil Extraction and waste oil refineries
- Bulk Drugs & Pharmaceuticals
- Effluent Treatment Plants
- Heating & Air Conditioning plant
- Water Treatment & Distribution System
- Thermic Fluid / Hot Oil
- Corrosive / Abrasive liquid

'JCPP' are in Back Pull-out Construction, Horizontal, Foot Mounted, Single Stage, End suction and Top Centerline Discharge, Confirming to DIN 24256 / ISO 2858, Standard and in general Confirming to API 610 as well.

MATERIAL OF CONSTRUCTION

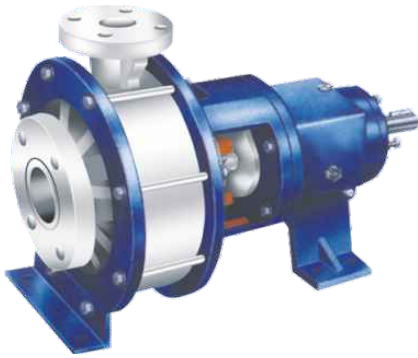
As per ASTM / DIN STANDARDS

- Graded Grey Cast Iron
- Carbon Steel (WCB) / Alloy Steel
- CF8, CF8M, CF3, CF3M (SS316L), Alloy 20,
- Gun Metal / Bronze

CONSTRUCTIONAL OPTIONS

- Offered with Closed or Semi open Impeller.
- Standard Bearing / Specific Heavy Duty.
- Various Shaft Sealing Available depending on the service

JACTP



CENTRIFUGAL PROCESS PUMP

Capacity - Q- up to	400 M ³ / hr
TDH- H- up to	100 MLC
Temperature	80° C
Working Pressure	6 Bars

MATERIAL OF CONSTRUCTION

Available in PP, GFP & PVDF.

PRODUCT APPLICATIONS

- Effluent Treatment
- Filtration
- Recirculation of Electrolytes
- Alkalies Transfer
- Chemical, Dyes & Intermediates
- Effluent
- Water Treatment Plant
- Electro Plating
- Descaling and Picking
- Corrosive Gases like Cl₂, F₂, 802, 503, Co₂, Nh₃, etc.

Series '**JACTP**' solid injection moulded pumps are available in polypropylene (PP) and glass filled polypropylene (GFP) materials. These are suitable for all services compatible with PP.

These Pumps incorporate robust design to handle highly corrosive fluids including corrosive slurries.

'**JACTP**' designed in accordance with DIN 24256 / ISO 2858, DIN 24255 Standards and in general conforming to API 610.

JACLP



CENTRIFUGAL LINED PUMP

Capacity - Q- up to	400 M ³ / hr
TDH- H- up to	100 MLC
Temperature	up to 260° C (PFA) up to 180° C (FEP) up to 120° C (PVDF)
Working Pressure	10 Bars

MATERIAL OF CONSTRUCTION

Available in PFA, FEP & PVDF.

PRODUCT APPLICATIONS

- For Pumping Corrosive Acids, Alkalies, Oil, Solvents etc.
- For Process industries like Chemical, Paper, Pharma, Refineries, Fertilizer etc.

CONSTRUCTIONAL OPTION

- Semi-open, Dynamically balanced impeller accepts various seal arrangements
- Wetted parts are offered in various polymer materials

Series '**JACLP PFA**' lined pumps are top of the line pumps for handling highly corrosive fluids including high temperature services. Hi-tech lining process is employed to manufacture defect free components. These pumps can virtually replace expensive Hastelloy-B, Haetelloy-C and ceramic lined pumps at affordable price.

Dimension Standard - ISO 2858 and Design Standard- ISO 5199

JABP

BARREL & AODD PUMPS

Series '**JABP**' with versatile design and modular construction provide complete solution to fluid management needs. These pumps are available in Polypropylene, PTFE and Stainless Steel material of construction. Available with electric motor or pneumatically operated models.

APPLICATIONS

- Agriculture
- Automotive indus
- Pharmaceutical
- Food processing
- Plating
- Waste water tre
- Packaging units
- Laboratories
- Chemical plants



FEATURES

- SS 316, polypropylene, PTFE
- Sealless
- Self priming
- Continuous duty rated
- Can run dry
- High power, double insulated
- Quick draining
- For strong solvents like-acids, caustics & Bleaches,

Capacity - Q- up to	100 lpm
TDH- H- up to	21 m
Temperature	PP up to 80 °C PTFE up to 240 °C Ss316 up to 120 °C
Working Pressure	upto 2.1 bar



Series '**JAA**' air-operated double diaphragm pumps are sturdy, compact in design and are inherently self priming pumps. These pumps can handle viscous and abrasive fluids and can run dry without damage. These pumps are available in PP, PVDF, SS316 and aluminium materials.

JAA

Capacity - Q- up to	54 M ³ / hr
TDH- H- up to	80 m
Temperature	PP up to 80 °C PVDF up to 120 °C Ss316 up to 200 °C Aluminium upto 150°C
Working Pressure	7 Bars

JARP ENGINEERING, company provides a Qualitative array of Industrial Process Pumps Casting, Industrial Valves Casting, Aerospace Casting, Turbine Blades Casting, Defense Casting, Power Plant Boiler Parts Casting, , Marine Applications Casting, Engineering & Automation Casting, Fire Fighting Equipment Casting, and Earth Moving Machinery Casting. We can produce or develop any piece as per your Drawing, Specification, or a Sample for 3D measurement. We ensure that each of our final products are tested thoroughly at various stages of production to meet stringent customer requirement such as Hardness, Tensile property, Impact, Casting Soundness (Dye Penetrate, Magnetic Particle, Radiography Test) etc.

PRODUCT CAPABILITIES:

- Size per casting : 750X750X600mm
- Weight per casting : 25 grams to 125kgs
- Standards : Conforming to ASTM, DIN, AISI ,JIS, IS, BS, EN & other international standards

MATERIALS

- Precipitation Hardened Stainless Steel
- Carbon Steel
- Ferritic Stainless Steel
- Duplex Stainless Steel
- Martensitic Stainless Steel
- Cobalt Base Alloys
- Austenitic Stainless Steel
- Nickel Base Super Alloys
- Non Metallic Materials such as PP, PVDF, PFA, FEP etc

Nominal Dimension(mm)		Overall Dimensions (mm)							
Over	Up to	Up to 6	6 to 10	10 to 18	18 to 30	30 to 80	80 to 180	180 to 300	300 to 500
0	6	± 0.10	± 0.12	± 0.15	± 0.20	± 0.25	± 0.25	± 0.30	± 0.35
6	10		± 0.12	± 0.15	± 0.25	± 0.25	± 0.30	± 0.35	± 0.45
10	18			± 0.20	± 0.30	± 0.35	± 0.35	± 0.40	± 0.55
18	30				± 0.30	± 0.40	± 0.45	± 0.50	± 0.65
30	80					± 0.45	± 0.55	± 0.60	± 0.75
80	180						± 0.60	± 0.70	± 0.90
180	300							± 1.00	± 1.15
300	500								± 2.00

GENERAL TOLERANCE:

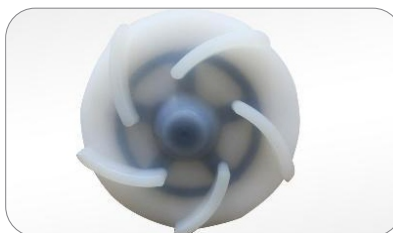
- Tolerance on Angle : ± 10
- Configuration like, small hole, Blind hole, Slot, Groove, Serration, Knurling, Under-cuts can be achieved as cast, depending upon overall geometry, complexity and size of the components.
- Surface Roughness : As Cast : 3.0 to 6.0 Ra μ
- Machining Allowances : 0.5mm to 2mm wherever machining fitment is expected
- More closer dimensional tolerance also can be achieved , as per International standard ,with additional operations.

PUMP : IMPELLER NUT



MOC : Alloy 20 (CD4M7)
Feature : Spring Mounted

PUMP : PVDF IMPELLER



MOC : PVDF
Size : 192 x 22 mm

PUMP : IMPELLER



MOC : UHMW-PE
Size : 190 x 20 mm

PUMP : IMPELLER



MOC : CD4M (Duplex SS)
Size : 290 x 47 x 142 mm

PUMP : IMPELLER



MOC : SS316
Size : 210 x 42 x 32 mm

PUMP : CASING



MOC : Ni Hard
Size : 545 x 100 x 65 mm

PUMP : IMPELLER



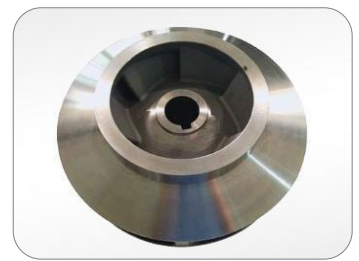
MOC : SS 304
Size : 178 x 32 x 18 mm

PUMP : IMPELLER



MOC : SS 316
Size : 192 x 22 x 18 mm

PUMP : IMPELLER



MOC : CD4M (Duplex SS)
Size : 320 x 48 x 52 mm

PUMP : CASING



MOC : Alloy 20 (CD4M7)
Size : 339 x 40 x 149 mm

PUMP : LINER



MOC : HC 600
Size : 370 x 140 x 40 mm

PUMP : IMPELLER



MOC : UHMW-PE
Size : 190 x 20 mm

PUMP : IMPELLER



MOC : Carbon Steel
Size : 245 x 38 x 25 mm

PUMP : CASING, BLACK PLATE



MOC : Ni Hard
Size : 370 x 140 x 40 mm

PUMP : IMPELLER WEAR RING



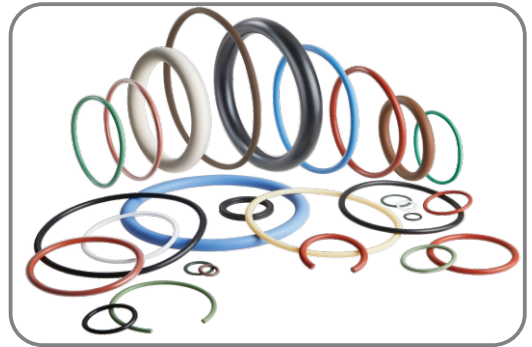
MOC : Alloy 20 (CD4M7)
Size : 75 x 65 x 10 mm

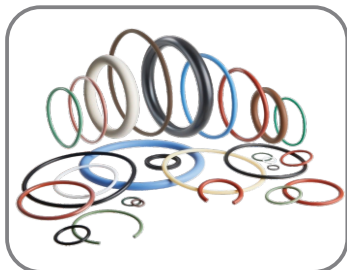
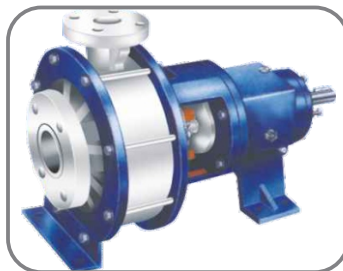
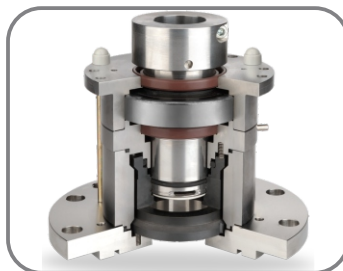
An o-ring is a round, mechanical gasket designed to be seated in a groove and compressed during assembly between two or more parts, creating a seal at the interface. O-Rings are one of the most common types of seals because they're inexpensive, reliable and have simple mounting requirements. O-rings are available in a variety of materials, in both standard and custom sizes.

Extruded rubber products are applied in a wide range of sealing and applications. They are available in various compounds and styles to meet specific end-use requirements involving various factors like size, tolerance, configuration, cost and performance.

EXTRUDED RUBBER PROFILES INCLUDE:

- D-, e-, J-, L-, P-, and T-shaped profiles
- U channels
- Half-round profiles
- Round cord
- Squares
- Rectangles





Office Add: C-403, Raj Nagar, 173, S.V. Road, Jogeshwari (W), Mumbai- 400 102.

Mfg. Add: A-24, Shukla Estate, Near Ganesh Mandir, Oshiwara, Jogeshwari (W), Mumbai - 400 102.

Tel: +91-22-26782012 / Mob: +91-9930913151 / Email: sales@jarpeng.com

Web: www.jarpeng.com